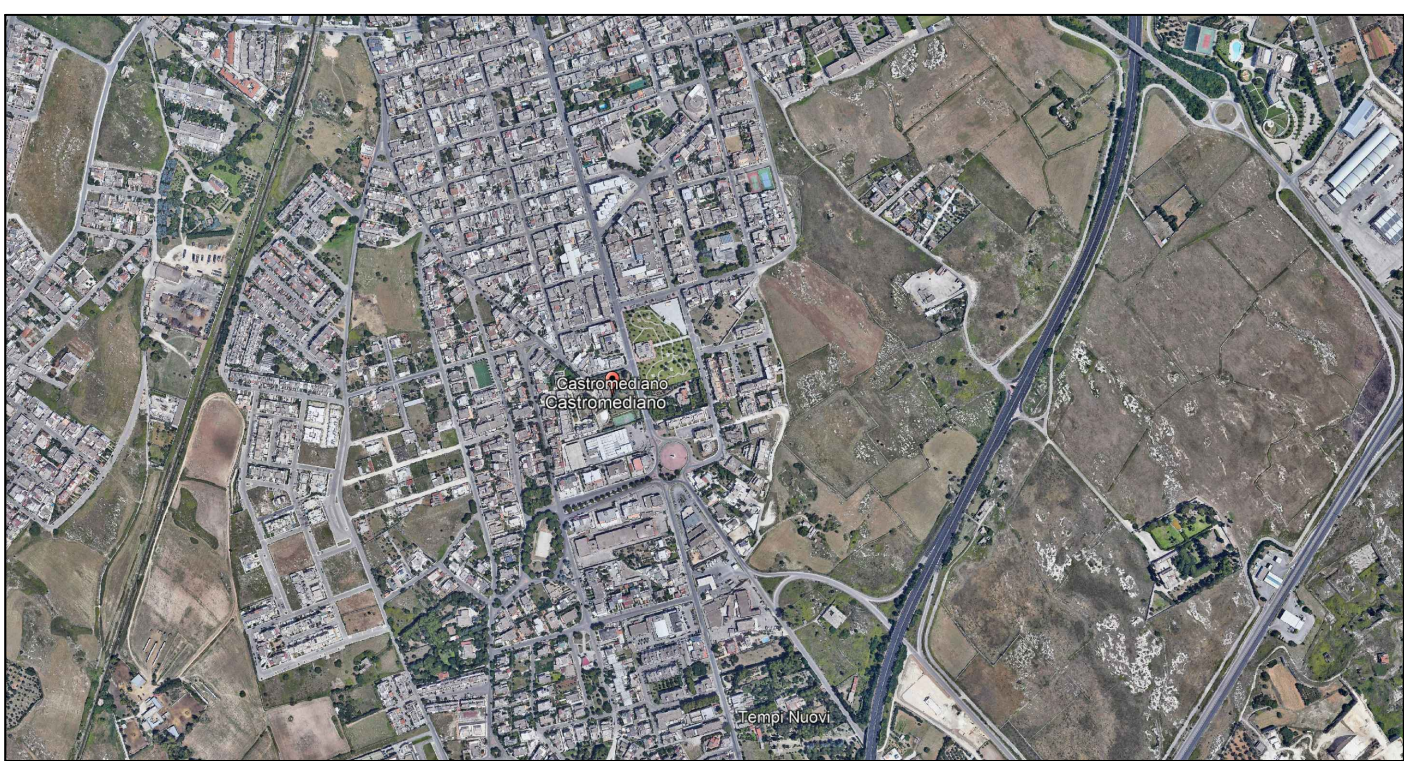




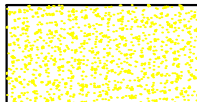
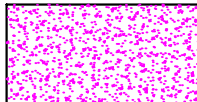
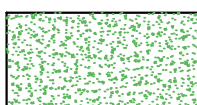
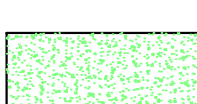

CITTA' DI CAVALLINO



PIANO PER ELIMINAZIONE DELLE BARRIERE ARCHITETTONICHE (PEBA)  
LEGGE REGIONALE 67/2018 ART. 87

NUMERO TAVOLA	TITOLO ELABORATO			COMMITTENTE		
	PLANIMETRIA GENERALE			COMUNE DI CAVALLINO		
	CASTROMEDIANO					
SCALA	DATA	NOOME FILE		REDATTO	VERIFICATO	APPROVATO
	GIUGNO 2022				Arch. Sara De Blasi	
REVISIONE	DATA	DESCRIZIONE REVISIONE		REDATTO		Arch. Sara De Blasi

LEGENDA

- UFFICIO POSTALE
- SCUOLE
- CENTRI SPORTIVI
- VERDE ATTREZZATO
- INTERSEZIONE DI INCROCI

